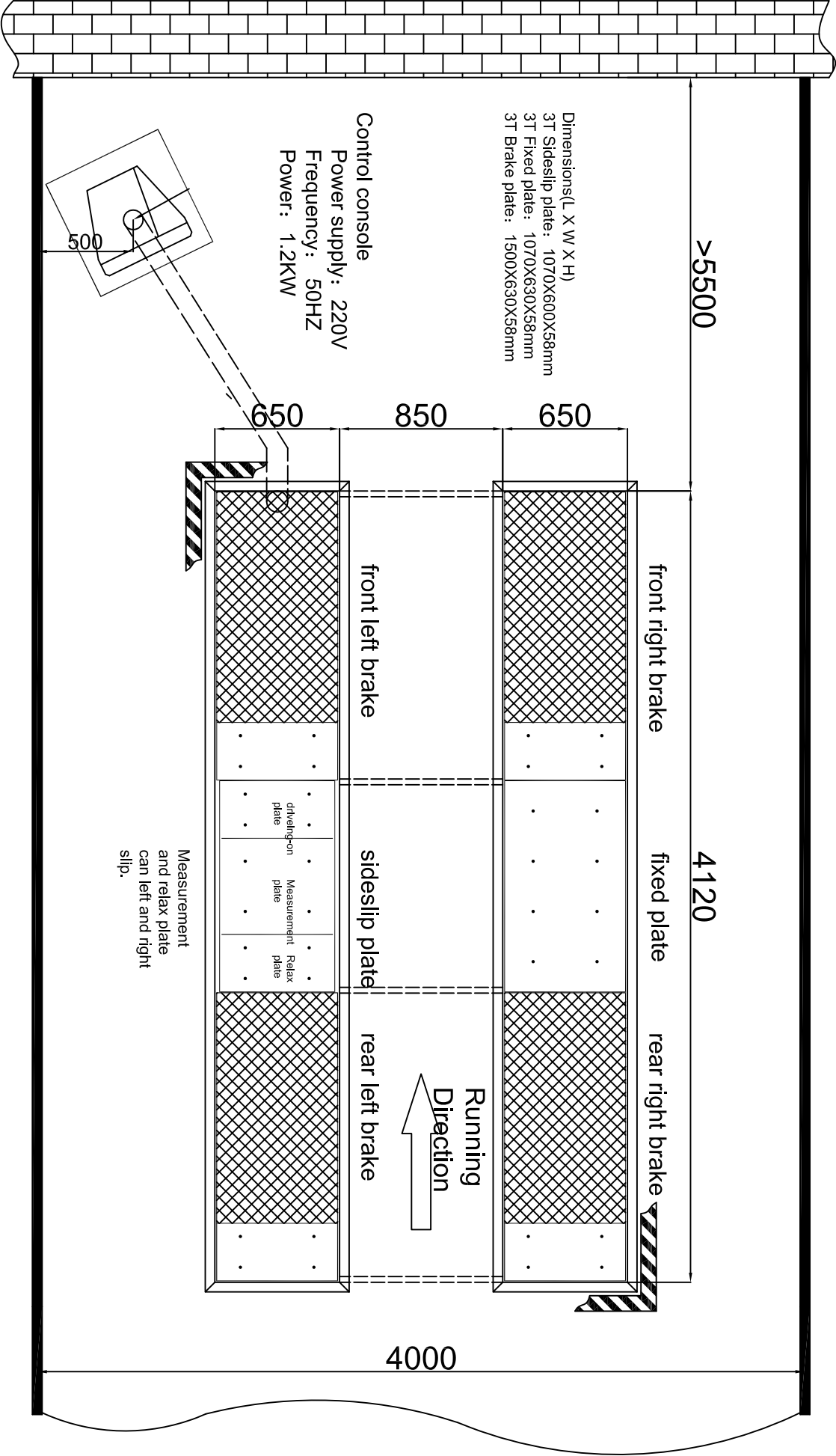


- Requirements:
- 1、The bottom of B should be smooth.The lever error should less than 2mm and pit diagonal error should be less than 3mm ;
  - 2、When the loading is more than 5T , the concrete thickness  $\geq 250$ mm and intensity must be higher than 25MPA
  - 3、Considering the water proof and water drainage.
  - 4、The steel frame should be smooth and stable.The hook should be welded with angle iron.
  - 5、The pipe should be clean and it's better to put an iron wire in it to guide the cables.
  - 6、The pipe need to go through the frame steel.
  - 7、No specific requirement for control console.usually in the front of the pit three meters away

3T Four Plate Indicate Pit Drawing				Pit1 and pit 2 dimensions Length: 4120mm Width: 650mm Height: 60mm Distance: 850mm			
Name				Serial Number			
Date	2009/05/25	Department		JVP4-DJ-003			
Scale	1 : 1	Designer		Editor	A	B	C
Drawing		Inspector			D	E	
Company	Shanghai JEVOL			Units	mm		





Instruction:

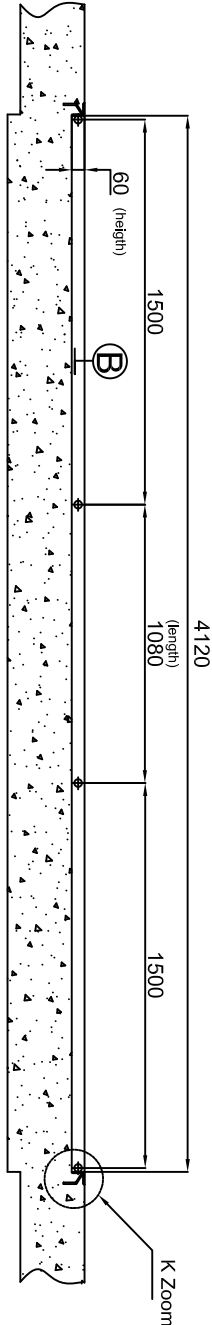
1. Please read the pit drawing before construction;
2. The distance between the wall at least 5.5 meters;
3. The passage has no requirement if there is no obstacle in front of the pit;
4. Considering the water proof and water drainage

Name					3T Four Plate Position Drawing				
Date		2009/05/25		Department		Serial Number			
Scale		1:1		Designer		JVP4-3T-001			
Drawing		Inspector				Edition			
Company		Shanghai JEVOL				Units		mm	



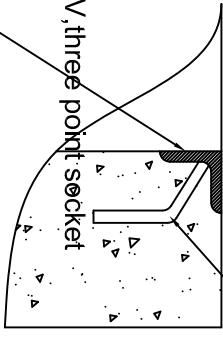
A-A

Front view



K Zoom

Φ6 steel hook



control console  
Power supply: 220V, three point socket

Frame made by 5# angle iron

vertical view → B

Φ110PVC cable conduit  
connect to control console

4120  
(length)

Pit1 (4120 X 650 X 60mm)

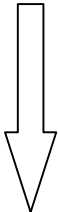
650  
(width)

1500

1080

1500

Running Direction



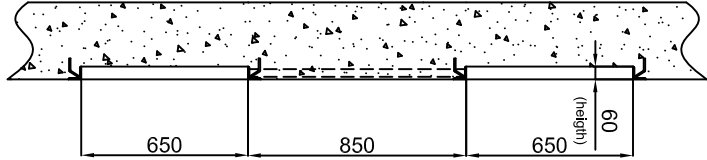
Φ32PVC cable conduit  
four

850  
(distance)

650  
(width)

Pit 2 (4120 X 650 X 60mm)

steel frame



B-B

right view

Requirements:

- 1、The bottom of B should be smooth. The lever error should be less than 2mm and pit diagonal error should be less than 3mm ;
- 2、When the loading is more than 5T , the concrete thickness  $\geq 250$ mm and intensity must be higher than 25MPA
- 3、Considering the water proof and water drainage.
- 4、The steel frame should be smooth and stable. The hook should be welded with angle iron.
- 5、The pipe should be clean and it's better to put an iron wire in it to guide the cables.
- 6、The pipe need to go through the frame steel.
- 7、No specific requirement for control console, usually in the front of the pit three meters away

# 3T Four Plate Pit Drawing

Date	2009/05/25	Department	Serial Number					
Scale	1 : 1	Designer	JVP4-DJ-002					
Drawing		Inspector	Edition	A	B	C	D	E
Company	Shanghai JEVOL		Units	mm				